



TYPEFACE PROJECT

Using the images we will shoot in class as a guide, your assignment is to make a self-portrait using only typographic characters. Load your picture into Illustrator, we will use it as a base. Then begin adding your type. Use the letters to illustrate your face, thinking about how your design reflects you. Think about your own identity and study your face and its characteristics. Examine the forms of typographic elements closely to determine what will represent you best. Letters, numbers, and alphabetic symbols such as parentheses are allowed, as are combinations of different typefaces. Your design should be black and white, Refer to the examples for inspiration.

Due 8/31/12

Typographic Self-Portrait

Your Objective:

To use the digital image we took of you and compose an original digital self-portrait using only typographic characters and Illustrator as your artistic tool.

Rationale for assignment:

Technical:

To gain a basic understanding of the Type tool, the Transform functions and to become acquainted with the use of a variety of tools in Illustrator, as well as the intricate differences between letters and type families.

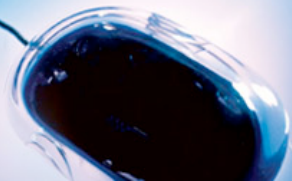
Artistic:

To apply the elements of art and principles of design previously learned and create a unique, interesting and artistic self-portrait.

Think About It

Look at a variety of type styles and think about how you can use letters, numbers, and alphabetic symbols such as parentheses and other combinations to illustrate your portrait. Think seriously about how your design reflects YOU and your personality, and captures the essence of who you are. Think about your own identity and study your face and its' characteristics. Examine the forms of typographic elements closely to determine what will represent you best.

Your design should be in black and white, although you may use a color background if you wish.



Examples of Student Work



Figure A



Figure B



Figure C



Figure D



Figure E



Figure F



Figure G



Figure H



Figure I



Graphic Design

Olympian High School

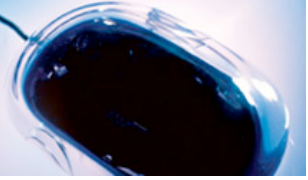


Figure J



Figure K



Figure L

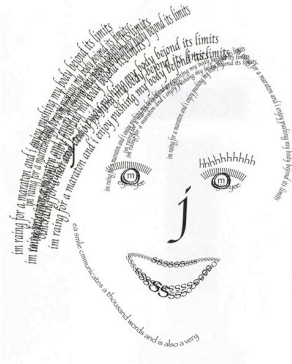


Figure M



Figure N



Figure O



Directions:

1. Take your picture in Photobooth or with a digital camera or your phone

Make it interesting

Asymmetrical angles

Profiles

Choose **File>Save** from the menu bar.

Choose Desktop, and create a new folder inside your **NAME Folder** called **TypefaceProject**

Name your photo, then **save** your photo as a .jpg file to this folder

2. Open Illustrator

Click on the Illustrator Icon in the Dock (the Orange Ai)

Go to **File > NEW**.

Click **OK** and a new file will open.

3. Rename the original image and save:

From the desktop, navigate to where your photo is in your project folder. Select it and go to the FILE menu in the menu bar. Select DUPLICATE to make a copy of your photo. We do this so that we always have a clean copy of our photo.

Rationale: The reason you are doing this step is so that you work on a copy of the original and not the original itself.

4. Be sure the following palettes are open:

Go to **Window** from the menu bar. Show the STROKE, SWATCHES, and the CHARACTER Palettes (If it has a check next to its name, it is already open on the right side of your screen. If it is not checked, let go of the mouse when you scroll over the name and it will appear on the right side of the screen.)

5. Choosing the best character:

Start with an eyebrow for instance, but it can be any part of the face.

Choose the Type tool. Type a letter or character that you think will closely represent the shape of the eyebrow.

Create a new layer for each major part of the face. For example, when working on the nose, make a layer called "NOSE" and just use the parts of the nose on this layer. I strongly suggest you name your layers after the part of the face you are trying to represent i.e. R eye, or L ear, etc. This will make it easier to find later if you need to.



6. Manipulation Options:

Character Palette: (on right side of screen)(Window>type>Character)

Change Font Families

Change Font Size

Change Font Style

Scale Font Horizontally or Vertically

Scale – make the item larger or smaller

Rotate – change the angle of the item

Skew – slide the top to the right or left while the bottom stays fixed
Distort – change any side or corner independently

Flip Horizontal/Vertical

You will want to experiment with each selection until you find one that you think best fits the portrait.

7. Move the font into place:

You can move your font into place over your portrait using the **Move Tool** (the black arrow and the first tool in the tool box on the left side of your screen) or by clicking inside the box and moving the font over into position.

8. Check your work without the image underneath:

Go to the Layers palette (on the right side of your screen) and find the “background layer” and close (click on) the eye; the image will disappear. Click again and it will reappear. You can periodically re-check your progress by doing this step to see how your font portrait is coming along without the image underneath.

9 Working with Layers:

It is important that you understand what layer you are on at all times. You can tell what layer you are on because it will be highlighted in the Layers Palette.

9. Save your work:

Go to File > Save

Be sure you name your file, and save it to the NAME FOLDER you made on your desktop. Make a subfolder with the project name on it, and save all the parts for this project in the project folder