

SURREALISM

A VISUAL SURPRISE



WHAT IS UNUSUAL ABOUT THESE IMAGES?



The Lovers-
René Magritte,
1928



RENE MAGRITTE



The scenes you see look ordinary, except for the one element in each that is out of place.



RENE MAGRITTE



These images were painted by 20th century Surrealist Rene Magritte long before computer alterations were developed.

Rene Magritte, 1928



WHAT IS SURREALISM?

Surrealism is an artistic movement that is based on memories, feelings, dreams and the subconscious.

Surreal artists took everyday objects or scenes and added an element of surprise, an unexpected twist to reality.

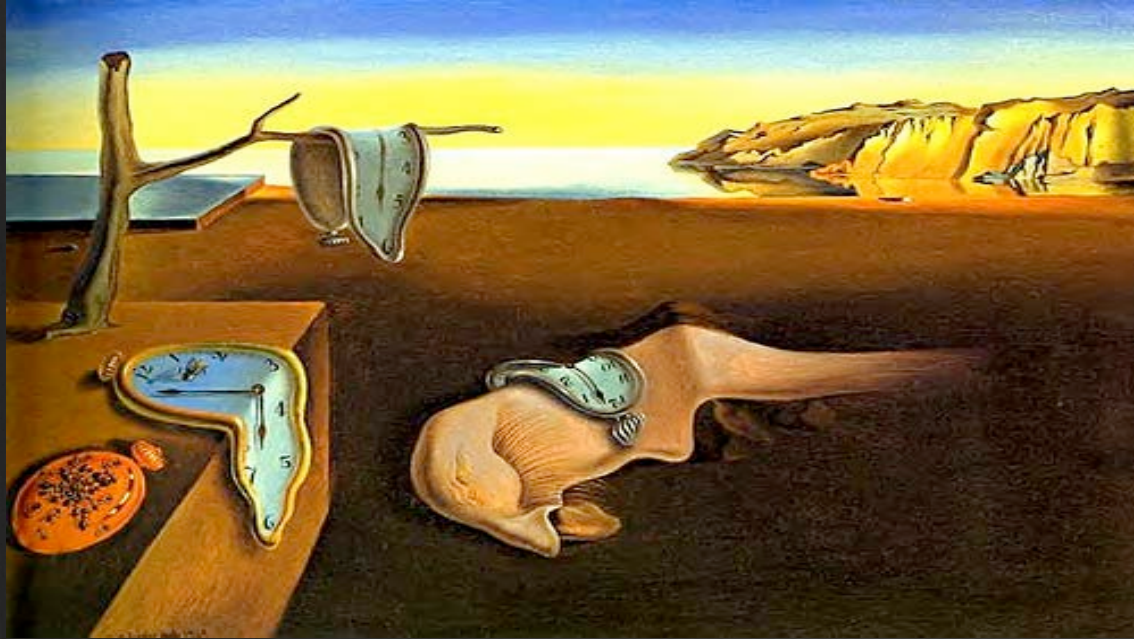


The False Mirror -

René Magritte, 1928



SALVADOR DALI



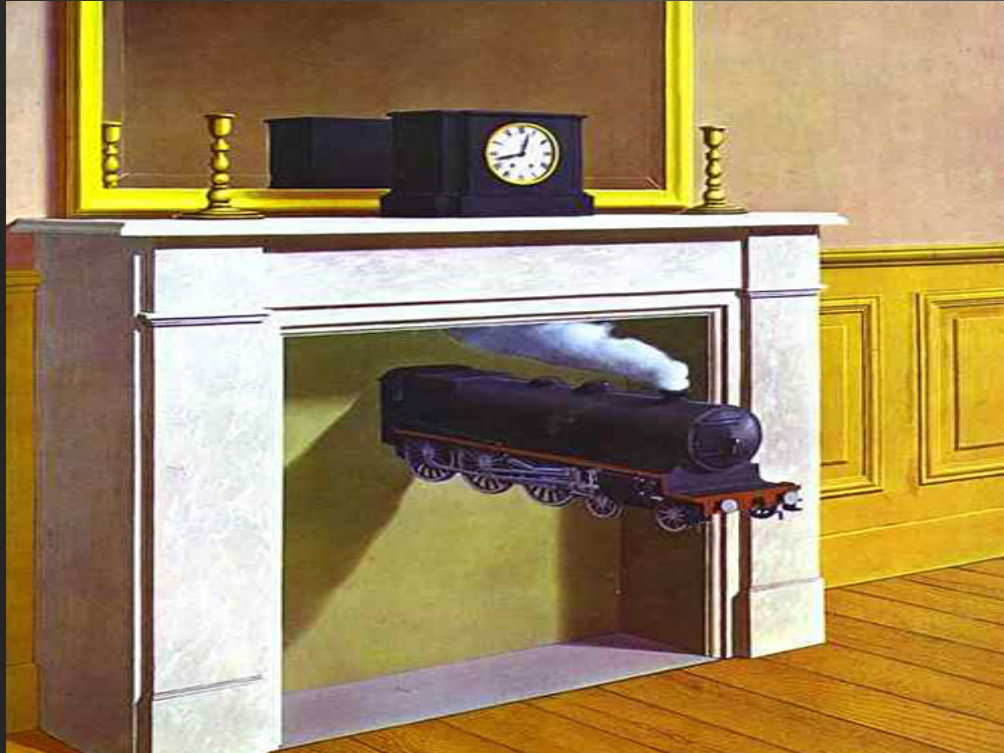
The Persistence of Memory -
Salvador Dali, 1931



Another well known surrealist is Dali, known for his nightmarish landscapes and fantasy worlds.



SURREAL DEVICES



To create visual twists or surprises, surreal artists used specific *surreal devices*:

Scale Change

Levitation

Transformation

Juxtaposition

Dislocation

Time Transfixed
René Magritte, 1938



SCALE CHANGE

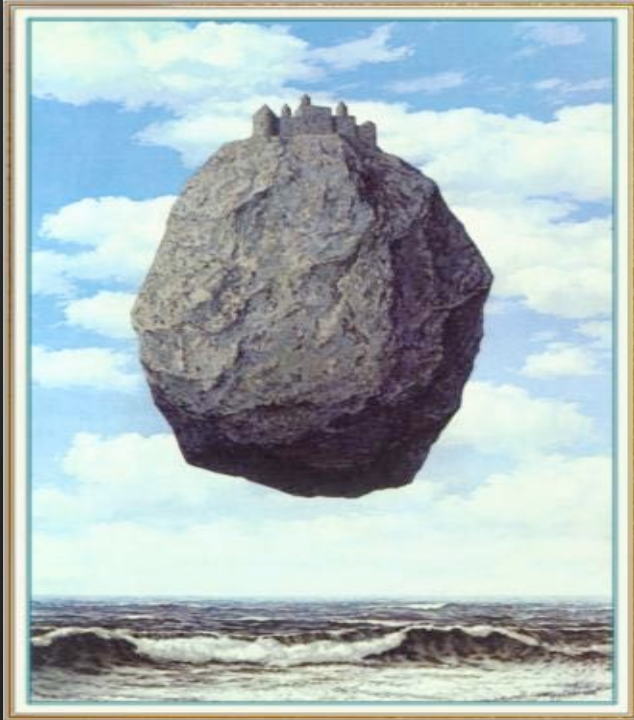
Changing an object's scale or relative size, was a favorite Surreal technique.

An enormous apple is as big as the enclosed room in "The Listening Room" by Magritte.

The Listening Room -
Salvatore Dali, 1952



LEVITATION



Levitation is when an artist makes an object float or fly that should not or cannot levitate for the surprise visual effect.

The Castle of the Pyrenees -
René Magritte, 1959



TRANSFORMATION

Transformation is a technique that changes the object right before our eyes; for example the men who are turned into stone by Magritte.



JUXTAPOSITION

Juxtaposition is another surreal device that **joins together** two images in impossible combinations.

The elephant and the instrument by Dali is an example of juxtaposition.



DISLOCATION

Dislocation is a device in which an artist takes an object and places it in a place it doesn't belong.

In this piece titled "Homesickness" by Magritte what is dislocated?



Personal Values -
René Magritte, 1951



CAN YOU TELL THE DEVICE(S) USED?



Personal Values -
René Magritte, 1951



CAN YOU TELL THE DEVICE(S) USED?



Personal Values -
René Magritte, 1953



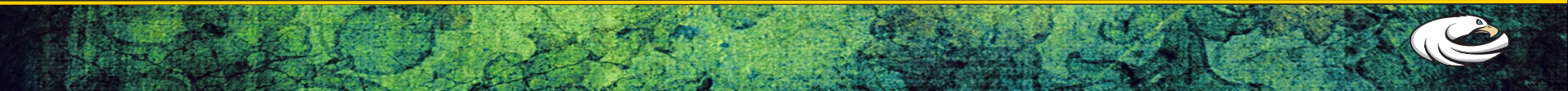
CAN YOU TELL THE DEVICE(S) USED?



CAN YOU TELL THE DEVICE(S) USED?



CAN YOU TELL THE DEVICE(S) USED?



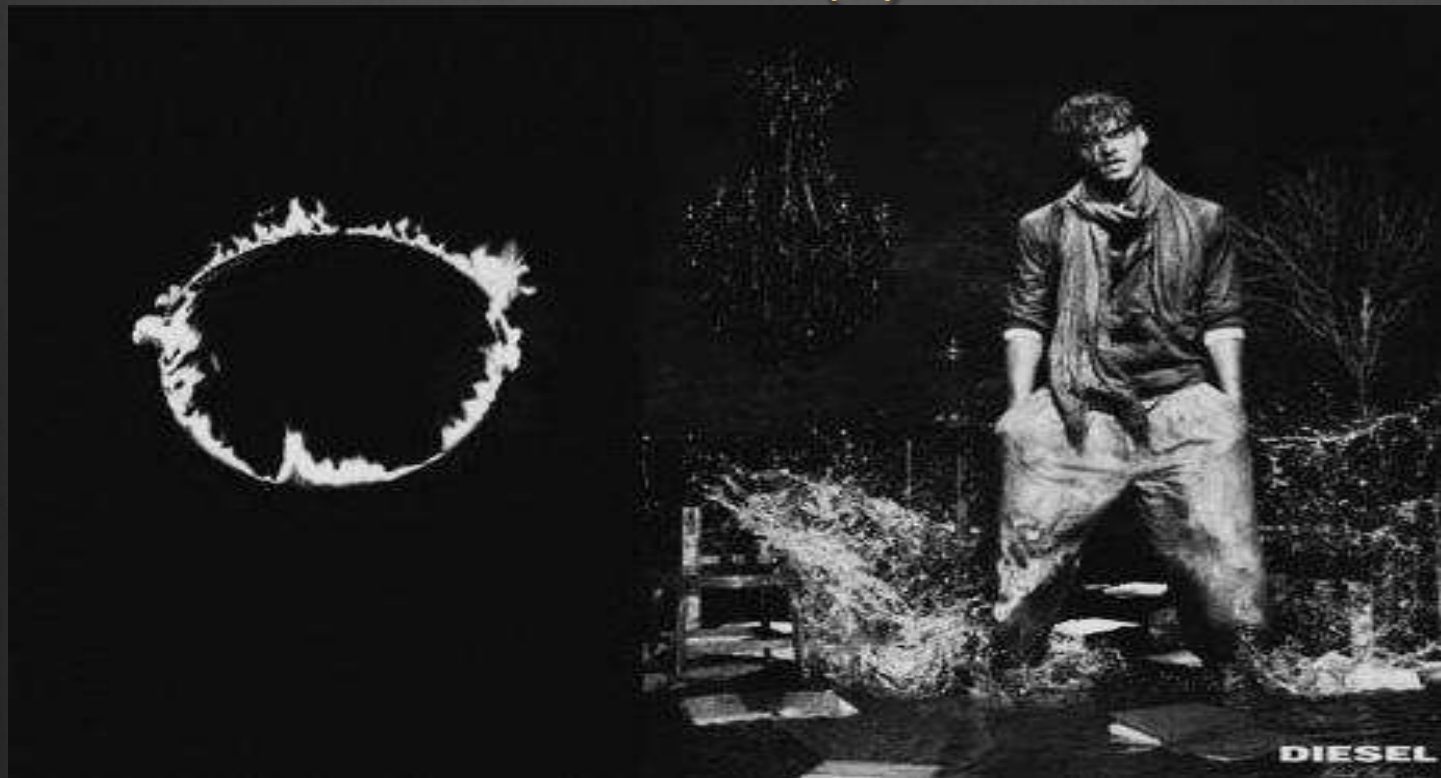
CAN YOU TELL THE DEVICE(S) USED?



CAN YOU TELL THE DEVICE(S) USED?



CAN YOU TELL THE DEVICE(S) USED?



CAN YOU TELL THE DEVICE(S) USED?



CAN YOU TELL THE DEVICE(S) USED?

IN AN ABSOLUT WORLD
MACHINES AMPLIFY YOUR CREATIVITY

INTERACT WITH THE ABSOLUT QUARTET MACHINE AT ABSOLUTMACHINES.COM

THE ABSOLUT VODKA

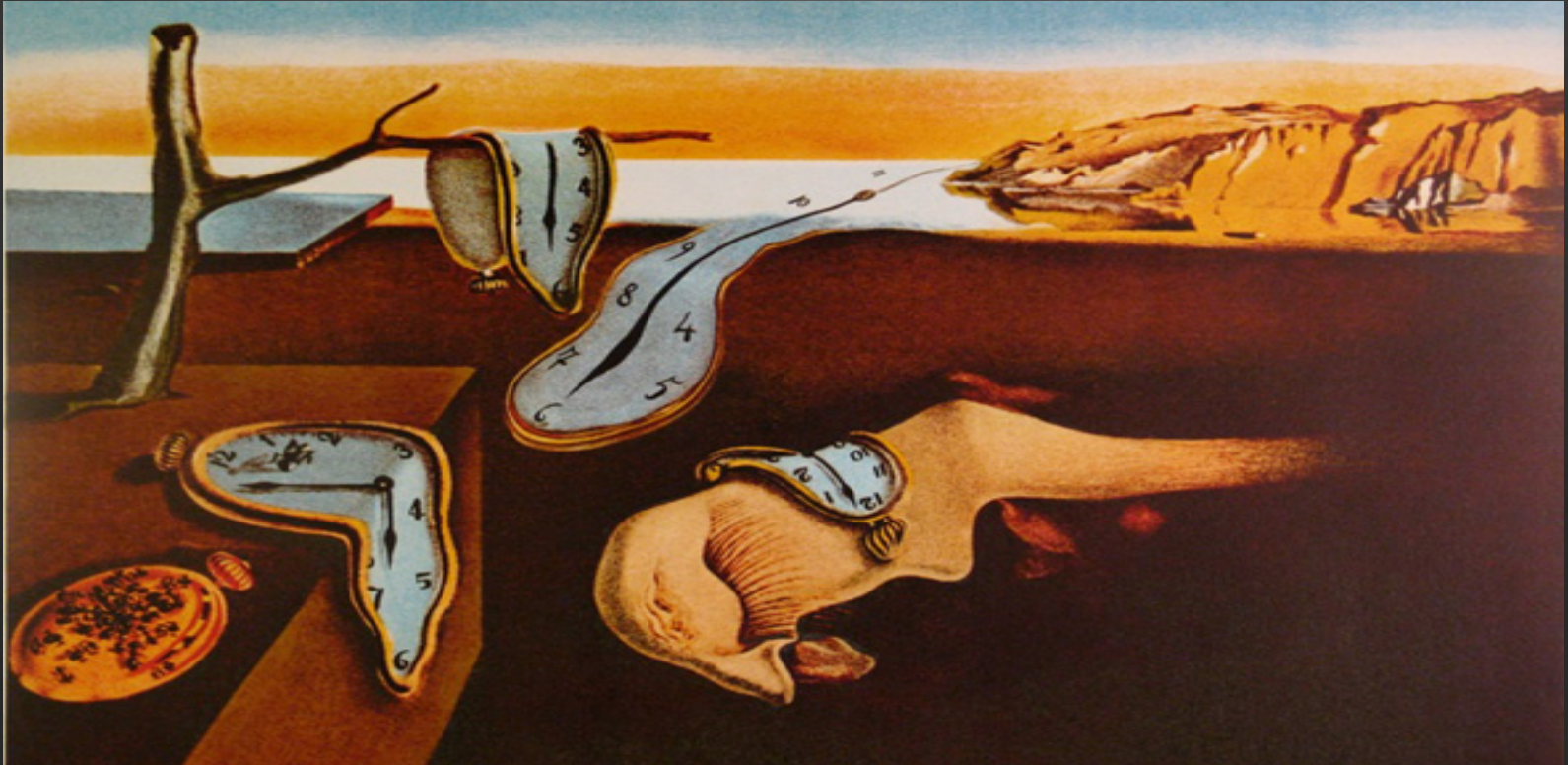
A man is seated on a white block in a futuristic, mechanical environment. The scene is filled with complex machinery, including a large, intricate structure resembling a human skeleton or a complex machine. The man is holding a device that appears to be a camera or a sensor. The background is a dark, industrial setting with various mechanical components and wires. A bottle of Absolut Vodka is visible in the bottom right corner.



INSPIRED FROM THE MASTERS



INSPIRED FROM THE MASTERS



INSPIRED FROM THE MASTERS



DON'T BE LOST IN
THE WEIRD
WORLD OF INVESTMENTS

WWW.INVESTIMENTOS.COM.BR

 Investimentos



INSPIRED FROM THE MASTERS



INSPIRED FROM THE MASTERS



DAMIEN DOSS



Al. Gabriel Monteiro da Silva, 1241 - São Paulo.

FOR 92 YEARS, COOKING HAS BEEN ART FOR US.
Surrealists turned dreams into art. And before that KitchenAid was doing the same in the kitchen: turning recipes into masterpieces. Find out about our products and other art movements at: facebook.com/kitchenaidbrasil.
KitchenAid. For those to whom cooking is art.

KitchenAid by Surrealism - 1931

